

# MasterTug series

- ✓ Easily push, pull and steer loads up to 44,000 lbs.

The MasterTug series provides unrivalled maneuverability when moving heavy-wheeled loads weighing up to 44,000 lbs. Using a unique weight transfer principle, the MasterTug series can move heavy weights whilst retaining a small machine footprint, making it ideal for precision moves in tight spaces.

With ergonomic controls, lightweight steering, and an intuitive design, the MasterTug takes the strain and allows operators to move heavy loads with total control. A secure coupling system maximizes load security and performance, guaranteeing total peace of mind.



# Benefits of the MasterTug series

## Small footprint, serious power

Our unique weight transfer system allows the MasterTug to move loads much heavier and larger than itself with total precision and control.

## Safe, efficient and flexible

Unlock safer, faster, and more efficient load movement, all with the flexibility to work across a range of environments.

## Total load security

Hydraulic couplings ensure secure, unbreakable connection to the load throughout every movement.

- ✔ Move up to 44,000 lbs
- ✔ Boost operational efficiency
- ✔ Minimize downtime
- ✔ No license needed
- ✔ Zero emissions
- ✔ Total load security
- ✔ Flexible alternative to traditional MHE



## Typical applications



### Aerospace manufacturing & MRO

Precisely move and position large assemblies, composites, aircraft components, engines, and mobile work platforms.



### Construction, mining & agricultural equipment

Maximize production flexibility and reduce takt time when moving sub-assemblies between production stages.



### Automotive & commercial vehicles

Faster production with even more flexibility to move a wide variety of tooling, components, and equipment.

# Key features

## Safe by design

Integrated warning horn, two-speed selector, automatic braking, emergency stop system and an anti-crush button.

## Built tough

A solid, steel design delivers the reliability needed for tough industrial environments.

## Hydraulic coupling systems

A secure hydraulic system creates an unbreakable connection to the load, maximising control and performance.



## Stainless steel options

Safely move equipment in cleanroom environments with high-grade 316 stainless steel options.

## Engineered for heavy-movements

Shift heavy weights with a machine that fits your space - by transferring weight directly onto the drive wheel, you get maximum traction without the large footprint of other equipment.

## Interchangeable batteries

Easy-swap batteries to maximize uptime across multi-shift environments with lithium upgrades also available.



# In application

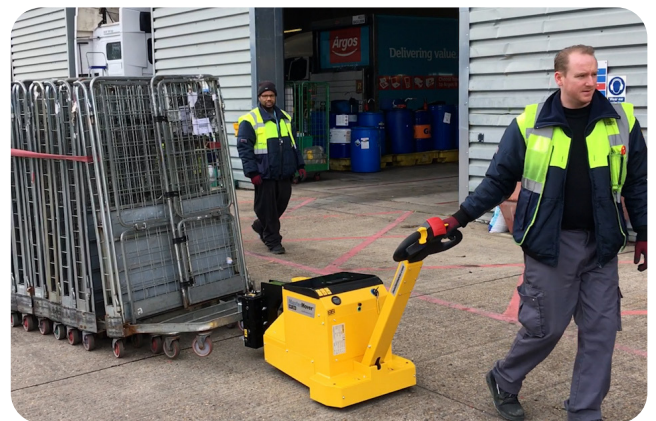
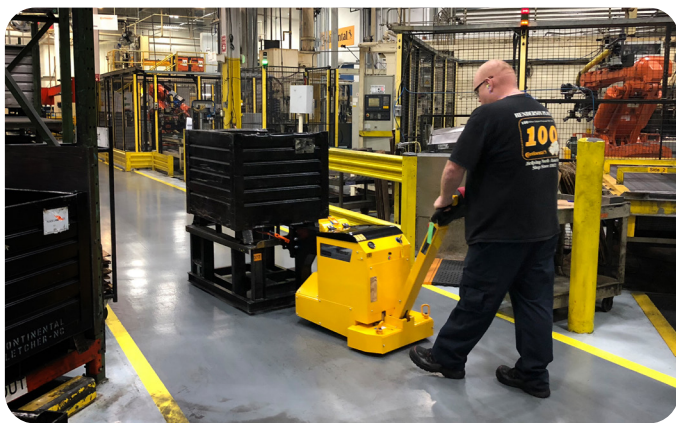


## Volkswagen reduce manual handling manpower by 50% with MT300+

Moving body-in-whites to inspection booths at a crucial stage of production

Custom coupling solution developed to connect securely to unique trolley systems

MT300+ electric tuggers have boosted safety & productivity for Volkswagen



# MasterTug models



MT200  
Moves up to 4,000 lbs.



MT1000+  
Moves up to 22,000 lbs.



MT300+  
Moves up to 6,600 lbs.



MT1200+  
Moves up to 26,400 lbs.



MT400+  
Moves up to 8,800 lbs.



MT1500+  
Moves up to 33,000 lbs.



MT600+  
Moves up to 13,200 lbs.



MT2000+  
Moves up to 44,000 lbs.



MT800+  
Moves up to 17,600 lbs.



Book a consultation today

See how the **MasterTug series** can transform your load moving processes and boost operational efficiency.

[sales.usa@mastermover.com](mailto:sales.usa@mastermover.com)  
980-263-2210

